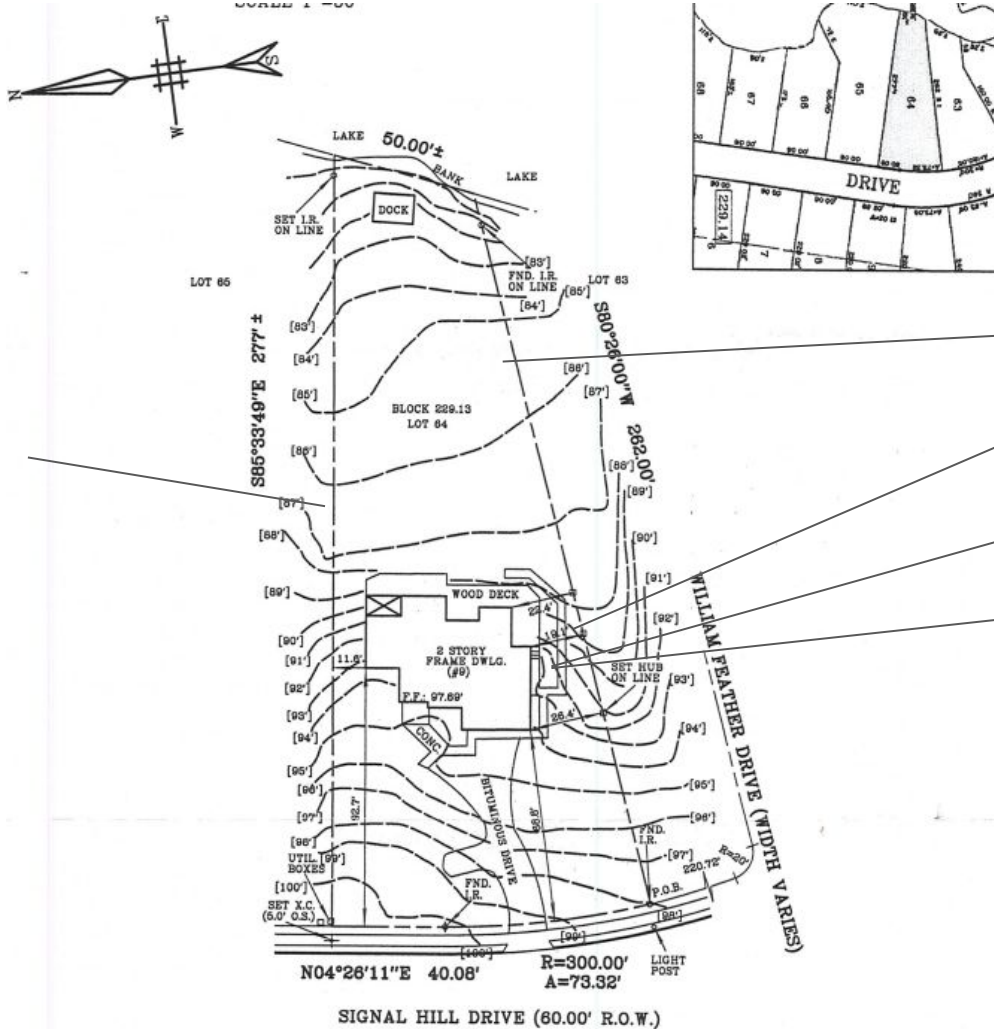


9 SIGNAL HILL DRIVE



Plant new pine tree in side yard for to replace 1 removed.

We got letter and email from manager on behalf of arch committee which we find unreasonable to plant a tree in September in heat to replace pine we took down. Would rather wait until Fall 2023 when construction equipment out of yard, but could plant Fall 2022 during construction by Oct 31 but on other side of property away from active construction.

Dead tree to remove

Landscaping side yard AFTER construction, including trees for privacy

Area of new addition, approved

Pine tree removed

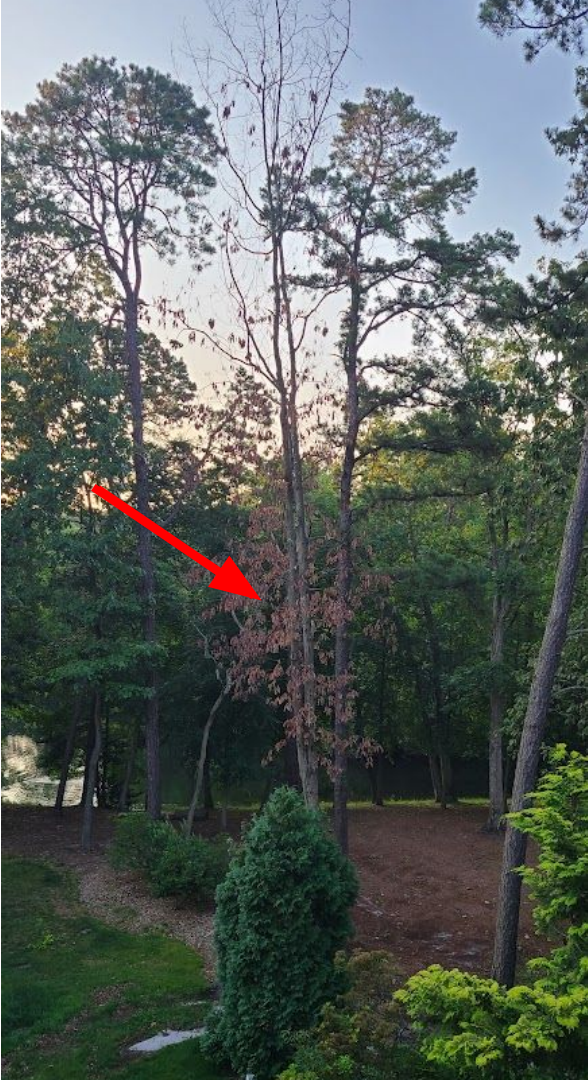


This leaning tree was removed for access of new basement / foundation

Tree was +/- 5 feet away, and in way of construction equipment and new addition.



Dead Tree
remove





New trees planted in past few years.